

Plot 206

THE SWALLOW - HOUSETYPE E

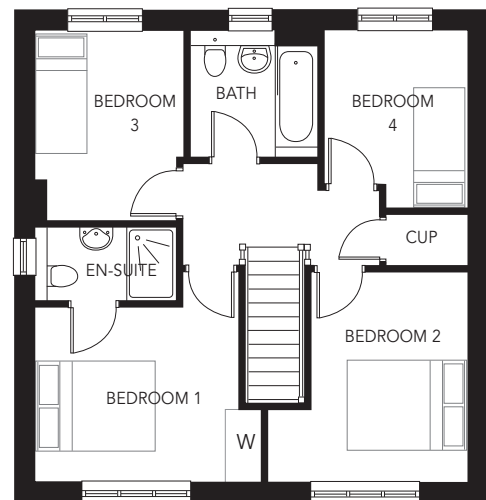
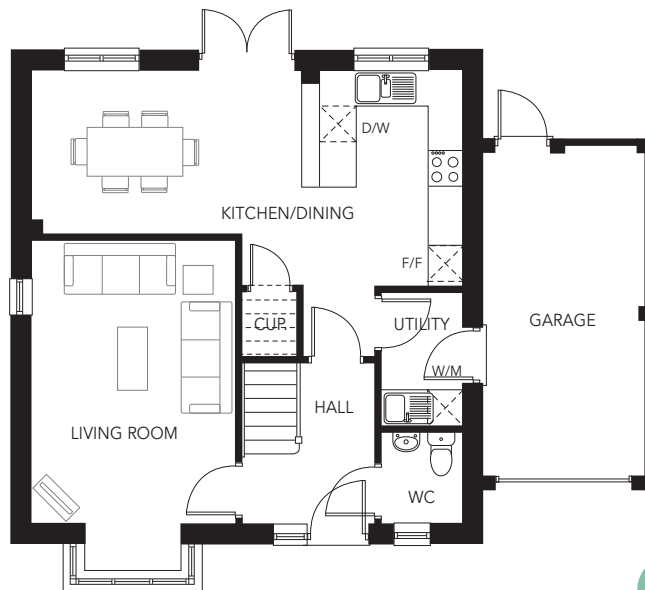
4 bedroom detached house

4, Harper Way, Sittingbourne, Kent ME10 3FA



heron fields

— at Great Easthall —



Ground Floor

Living Room	5.51m x 3.42m	18'1" x 11'2"
Kitchen/Dining	7.23m x 3.60m	23'9" x 11'10"

CUP = Cupboard
W = Wardrobe
W/M = Washing Machine
F/F = Fridge Freezer
D/W = Dishwasher

First Floor

Bedroom 1	3.42m x 2.93m	11'3" x 9'7"
Bedroom 2	3.52m x 2.59m	11'7" x 8'6"
Bedroom 3	3.17m x 2.49m	10'5" x 8'2"
Bedroom 4	2.97m x 2.37m	9'9" x 7'10"

Total internal area 110.8 sq.m. 1193 sq.ft.

Sales and Marketing Suite

Heron Fields at Great Easthall

Eveas Drive, Sittingbourne, Kent ME10 3FD

01795 474059

www.heronfields.co.uk

Note: Some plots are mirrored. Floorplans are not to scale and are indicative only. Location of windows, doors, kitchen units and appliances, and bathroom fittings may differ. Doors may swing in the opposite direction to that shown on selected units. All measurements have been prepared from preliminary plans and are intended to give a general indication of the proposed development and the size and layout of individual plots. Measurements shown are maximum room measurements. Total areas shown are maximum and may vary for each unit within a type. All dimensions are quoted in conformity with RICS (GIA EIFA) code of measuring practice (6th edition).